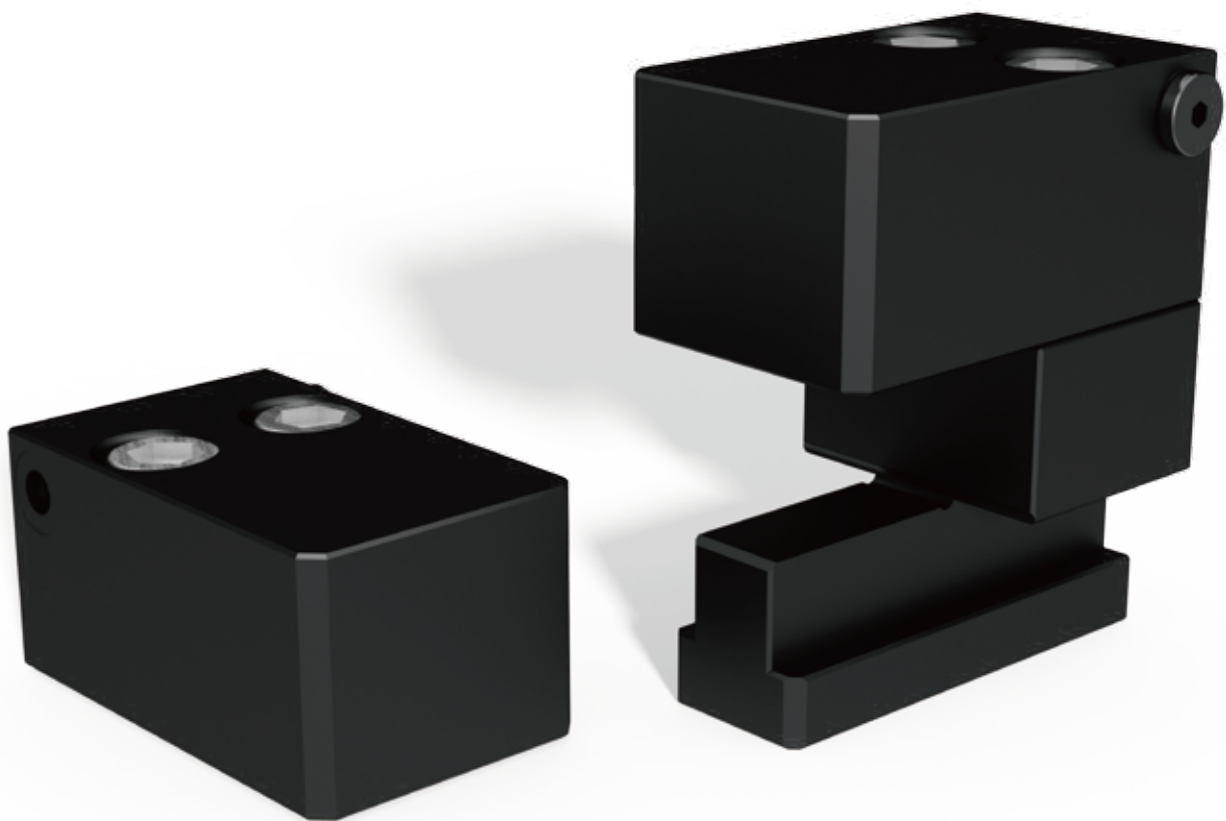


▶ TC SERIES

“ with more clamping stroke! ”

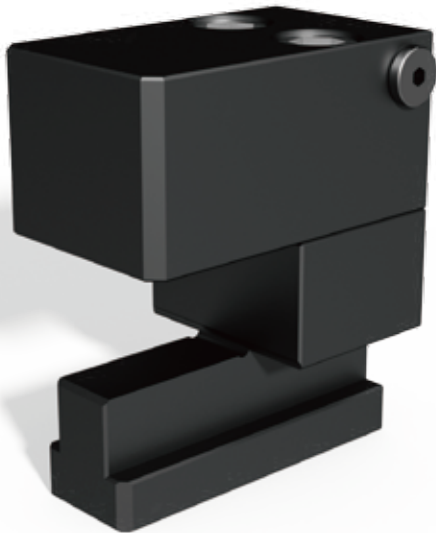


C型油壓夾模器

C Type Hydraulic Clamp

▶ TC 油壓夾模器 / TC Hydraulic Clamp

產品特色 / Product Features

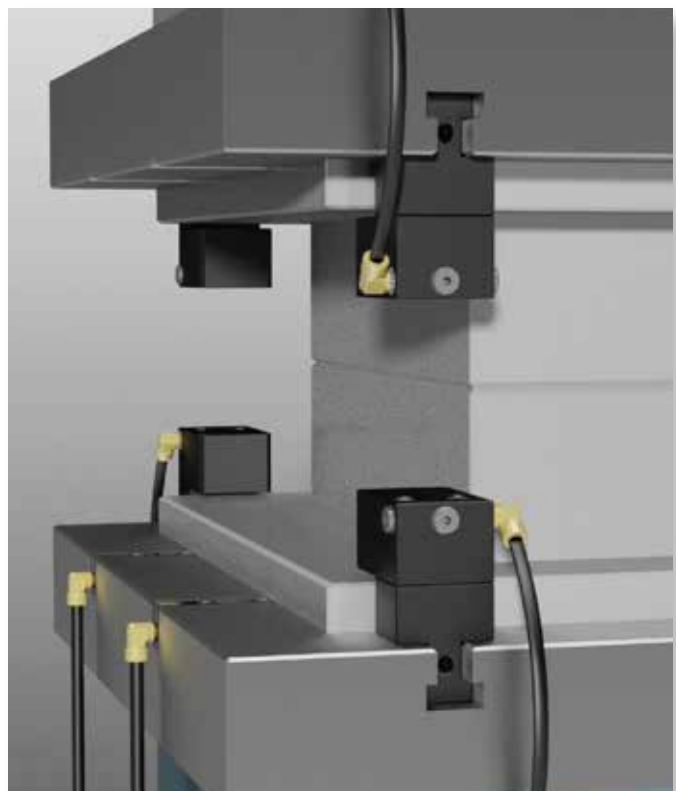


- ⊙ 利用油壓驅動活塞直接夾緊
Driven by hydraulic pressure directly to the piston
- ⊙ 夾緊行程大，使用範圍廣泛
Wide range of clamping stroke and various applications
- ⊙ 安裝簡易，操作便利
Easy installing and operating
- ⊙ 裝於 T 型溝內，可依模具尺寸調整位置
Adjust the position in the T-slot according to die dimensions
- ⊙ 附鎖緊螺絲，可固定位置
Fastening screw helps fixing the position
- ⊙ 最高操作溫度70°C
Operating temperatures up to 70 °C

產品應用 / Application

裝配於沖床或射出機之 T 型溝內，用以夾緊模具。適用於使用空間受限之場合。

TC clamps can be inserted into T-slot manually on the press or injection molding machine to clamp the die at its flat edge. The clamp is suitable for the situation when the available space is limited.



► TCS 油壓夾模塊 / TCS Hydraulic Clamping Block

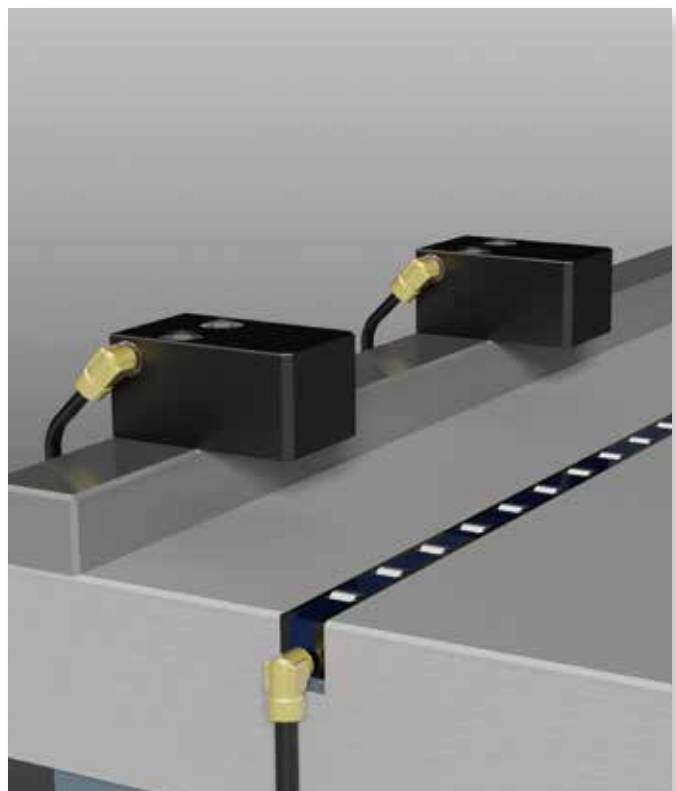
產品特色 / Product Features

- ◎ 利用油壓驅動活塞直接夾緊
Driven by hydraulic pressure directly to the piston
- ◎ 夾緊行程大，使用範圍廣泛
Wide range of clamping stroke and various applications
- ◎ 安裝簡易，操作便利
Easy installing and operating
- ◎ 不需要配合 T 型溝安裝
No T-slot needed for installation
- ◎ 適用於標準化模具
Suitable for standardization dies
- ◎ 最高操作溫度70°C
Operating temperatures up to 70 °C

產品應用 / Application

利用螺絲及墊塊裝配於沖床上，用以夾緊模具。適用於尺寸較固定的模具，台盤或滑塊不需有 T 型溝。

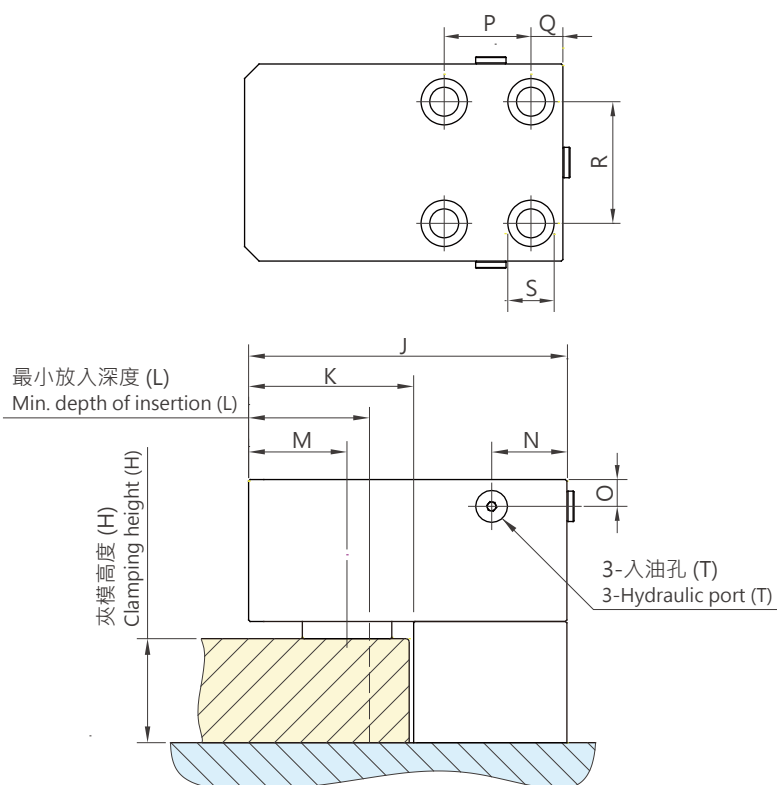
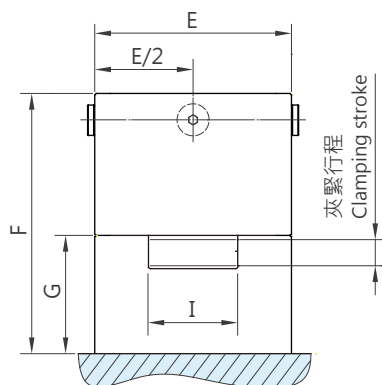
The clamping block can be mounted on the spacer ledges by screws in the press permanently, facilitating automatic die changing with fixed die size. T-slots are not necessary for this usage.



TCS 產品規格 / TCS Specification

※ 訂購時需告知模具高度

Provide required clamping height when ordering

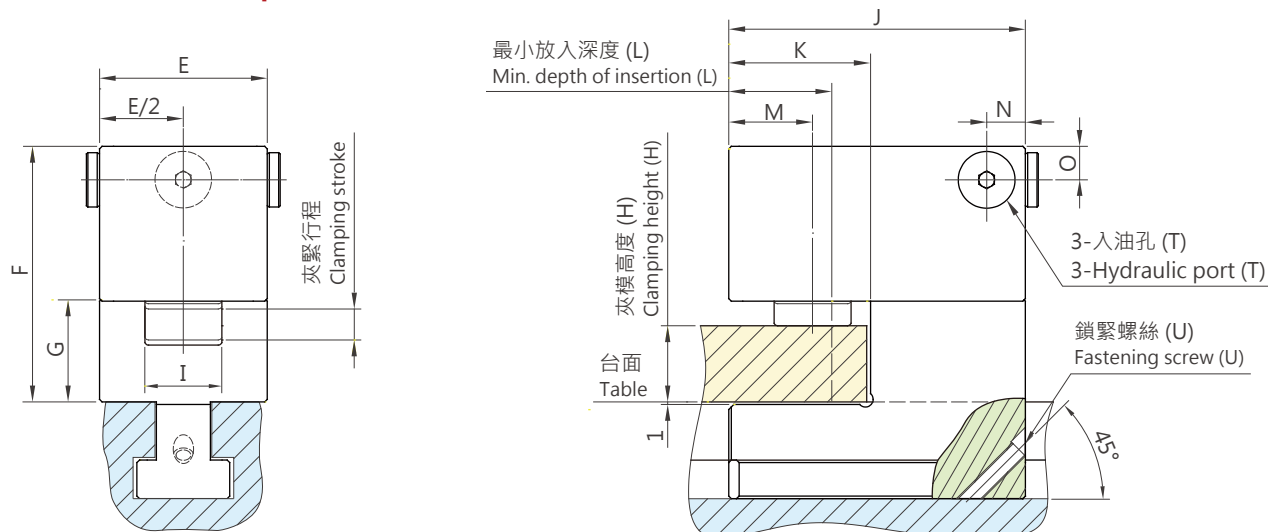


項目/Item	單位/Unit	TC-01S	TC-02S	TC-03S	TC-04S	TC-06S	TC-10S	TC-16S	TC-25S
夾緊力量/Clamping force ¹⁾	tf	1	1.5	2.4	4	6	10	16	25
需求油量/Oil consumption	cm ³	5.4	7.4	12.2	26.6	39.4	65.1	155.9	228.5
重量/Weight	kg	1	1.6	2.2	3	4.5	9.2	20.6	30.1
夾緊行程/Clamping stroke	mm		8			12		16	
Max. H ²⁾	mm	35	40	40	45	55	60	70	75
Min. H ²⁾	mm	20	25	25	25	35	40	45	50
E	mm	43	50	58	65	80	100	136	160
F	mm	G+43	G+49	G+55	G+60	G+65	G+82.5	G+98	G+105
G	mm		H+9			H+13		H+17	
I	mm	Ø16	Ø18	Ø24	Ø30	Ø37.5	Ø50	Ø62	Ø80
J	mm	75	91	103	115	130	165	220	255
K	mm	33	43	48	55	65	83	114	135
L	mm	27	30	35	40	48	60	80	100
M	mm	21.5	25	28	32.5	40	49	68	80
N	mm	13	16	18	15	14	21	52	58.5
O	mm	10.5	12	13	13	14	20	18.5	21
T	inch	Rc 1/8				Rc 1/4			
Q	mm	29	35	39	38	41	52	22	27
P	mm	-	-	-	-	-	-	60	63
R	mm	26	29	32	36	44	50	84	92
S	mm	M8	M10	M14	M16	M20	M24	M20	M24

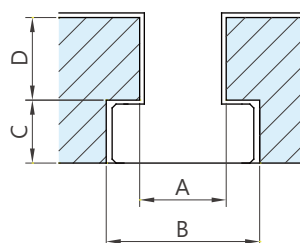
¹⁾ 油壓壓力 = 250 kg/cm²
Hydraulic pressure = 250 kg/cm²

²⁾ 可依需求訂製特殊夾模高度
Special clamping height on request

TC 產品規格 / TC Specification



※ 訂購時需告知 T 型溝尺寸 (A, B, C, D) 及模具高度
Provide actual T-slot dimensions (A, B, C, D) and required clamping height when ordering



項目/Item	單位/Unit	TC-01	TC-02	TC-03	TC-04	TC-06	TC-10	TC-16	TC-25
夾緊力量/Clamping force ¹⁾	tf	1	1.5	2.4	4	6	10	16	25
需求油量/Oil consumption	cm ³	5.4	7.4	12.2	26.6	39.4	65.1	155.9	228.5
重量/Weight	kg	1.6	2.6	3.8	5.4	8.4	16.8	30	52
夾緊行程/Clamping stroke	mm		8			12		16	
Max. H ²⁾	mm	35	40	40	45	55	60	70	75
Min. H ²⁾	mm	20	25	25	25	35	40	45	50
E	mm	43	50	58	65	80	100	136	160
F	mm	G+43	G+49	G+55	G+60	G+65	G+82.5	G+98	G+105
G	mm		H+9			H+13		H+17	
I	mm	Ø16	Ø18	Ø24	Ø30	Ø37.5	Ø50	Ø62	Ø80
J	mm	75	91	103	115	130	165	220	255
K	mm	33	43	48	55	65	83	114	135
L	mm	27	30	35	40	48	60	80	100
M	mm	21.5	25	28	32.5	40	49	68	80
N	mm	13	16	18	15	14	21	52	58.5
O	mm	10.5	12	13	13	14	20	18.5	21
T	inch	Rc 1/8				Rc 1/4			
U	mm	M5	M8		M10	M12		M16	

¹⁾ 油壓壓力 = 250 kg/cm²
Hydraulic pressure = 250 kg/cm²

²⁾ 可依需求訂製特殊夾模高度
Special clamping height on request

型號表示方法 / Nomenclature

TC-06M

能力/Capacity

01 = 1 ton
 02 = 1.5 ton
 ⋮
 25 = 25 ton

把手/Handle

無記號 - 標準型 ▶ 適用於沖床
 M - 附把手 ▶ 適用於射出機
 No symbol - standard ▶ for press machine
 M - with handle ▶ for injection molding machine

TC-01S

能力/Capacity

01 = 1 ton
 02 = 1.5 ton
 ⋮
 25 = 25 ton

相關配件 / Accessory

把手/Handle

TC系列裝配於射出機時，夾具可加裝把手，方便移動。

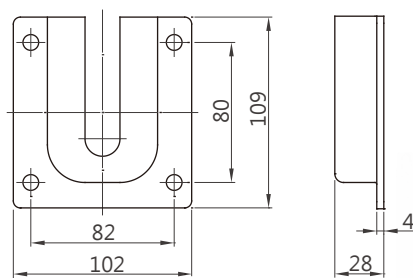
The handle can be added on the clamp for moving in the injection molding machine more easily.



支架/Bracket

安裝於沖床台盤或滑塊上。利用TC夾具上的T型腳座，換模時可暫時置放於支架上。

The T shape of clamp can be put into the bracket temporarily when changing die, which is mounted on the lateral side of bolster or ram.



單位/Unit : mm

※ 配件尺寸會因型號不同而變動
 Dimensions of accessories will change according to different models



肯岳亞股份有限公司

KING AIR AUTOMATION CORPORATION

40849 台中市南屯區文山北巷1-5號

40849 No. 1-5 Wenshan N. Lane Nantun District, Taichung, Taiwan

TEL: +886-4-2387-6060

FAX: +886-4-2387-6161

Email: sales@king-air.com.tw

http://www.king-air.com.tw